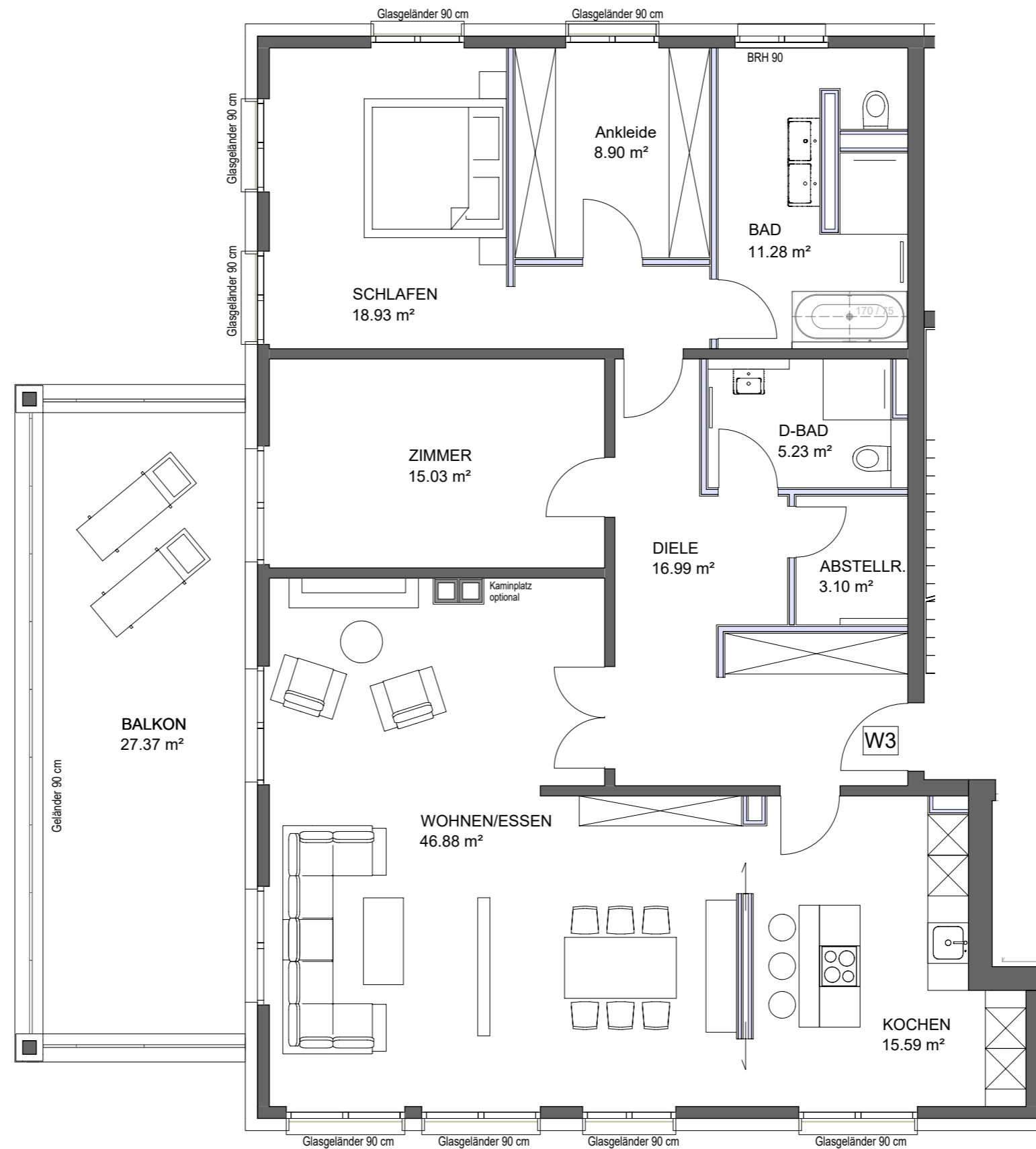
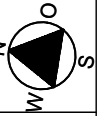
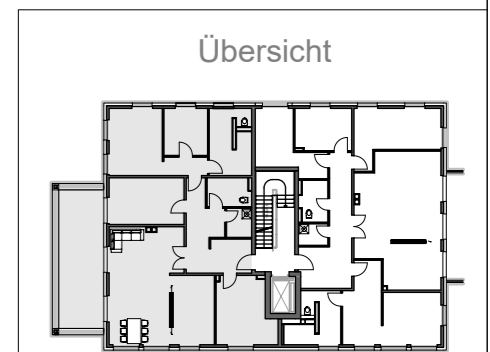


Stadtvilla Müllenhoffweg 64



3-V1--

1 m 1 m 1 m



Wohnung 3 - Variante 1 Obergeschoss

Wohnfläche gem. WoFIVO : 155,45 m²
(Balkon zu 50%)

nutzbare Wohnfläche : 169,13 m²

Maßstab 1:75