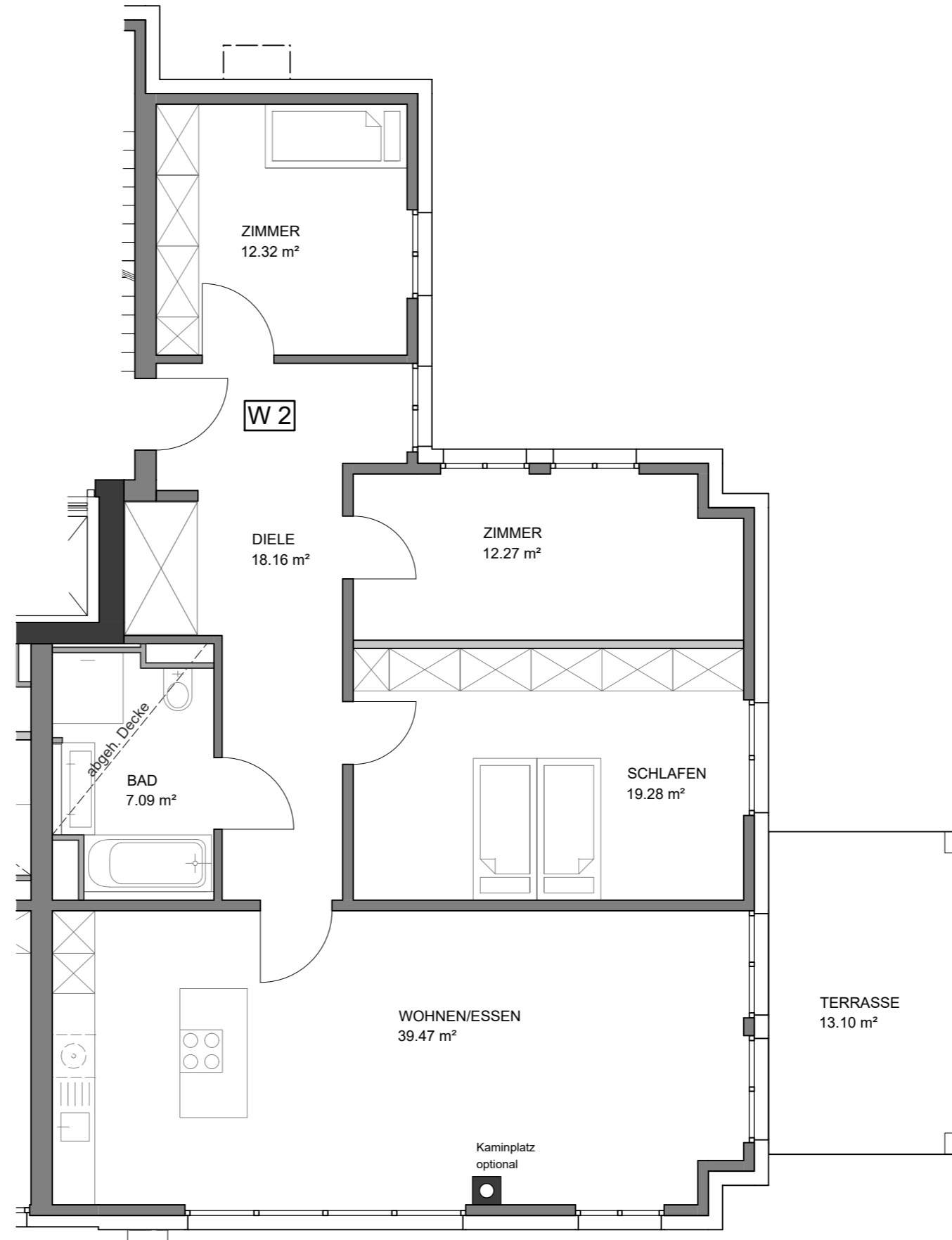
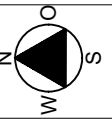


# Stadtvilla Ordinger Weg 12



1 m 1 m 1 m

<b>Wohnung 2 - V2</b>	Erdgeschoss	Wohnfläche gem. WoFIVO: 115,14 m <sup>2</sup> (Terrasse zu 50%)	nutzbare Wohnfläche: 121,69 m <sup>2</sup>	Maßstab 1:75
-----------------------	-------------	--	--	--------------