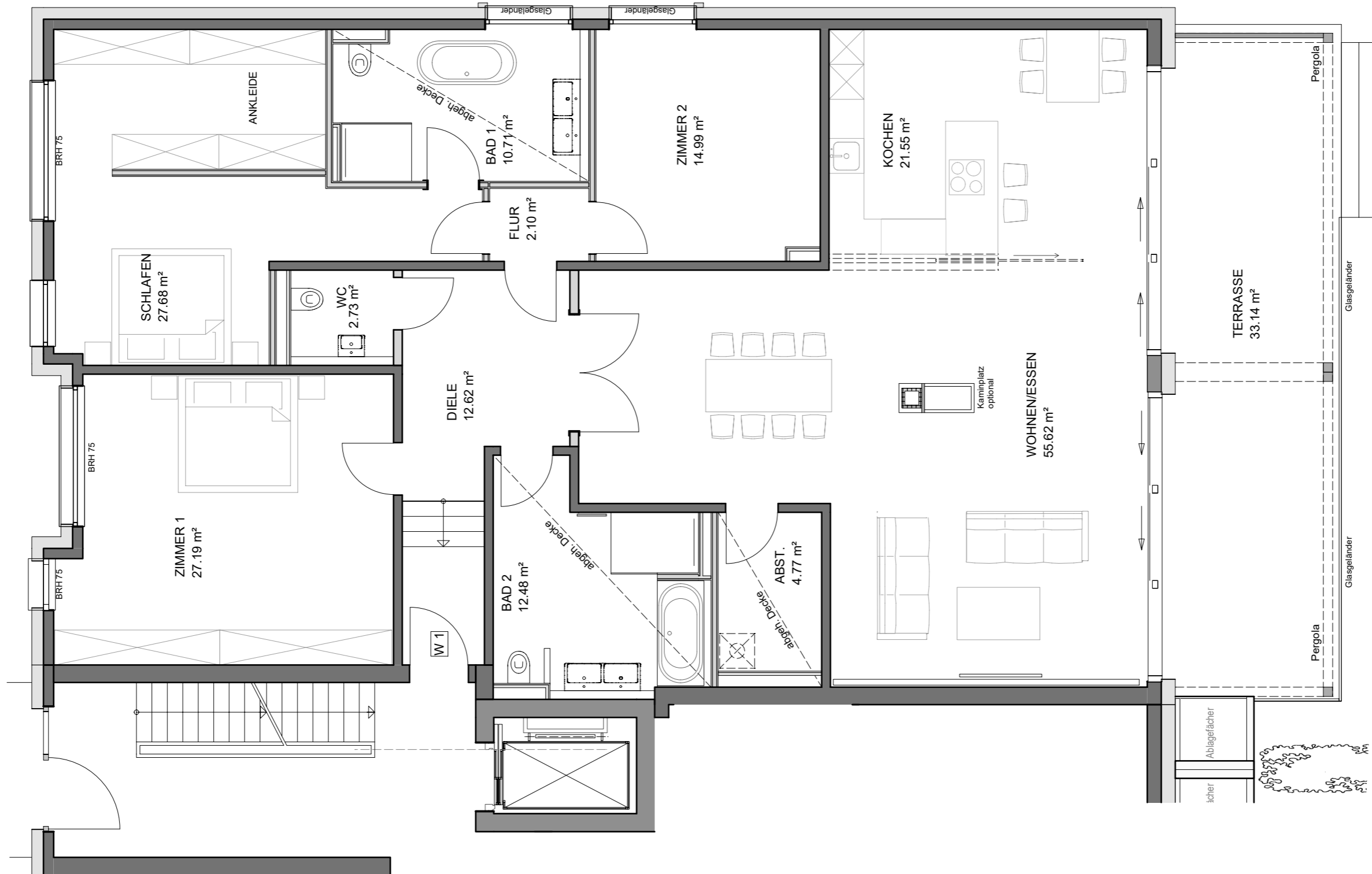
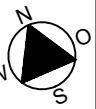
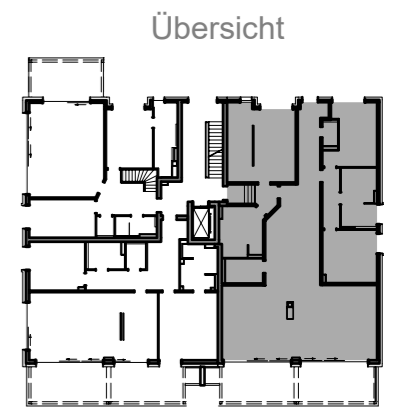


Stadtvilla Biesterfeldweg 6



1 m 1 m 1 m



Wohnung 1 - V1

Erdgeschoss

Wohnfläche gem. WoFIVO: 209,01 m²
(Terrasse zu 50%)

nutzbare Wohnfläche: 225,58 m²

Maßstab 1:75

H/B = 297 / 420 (0.12m²)

Allplan 2023