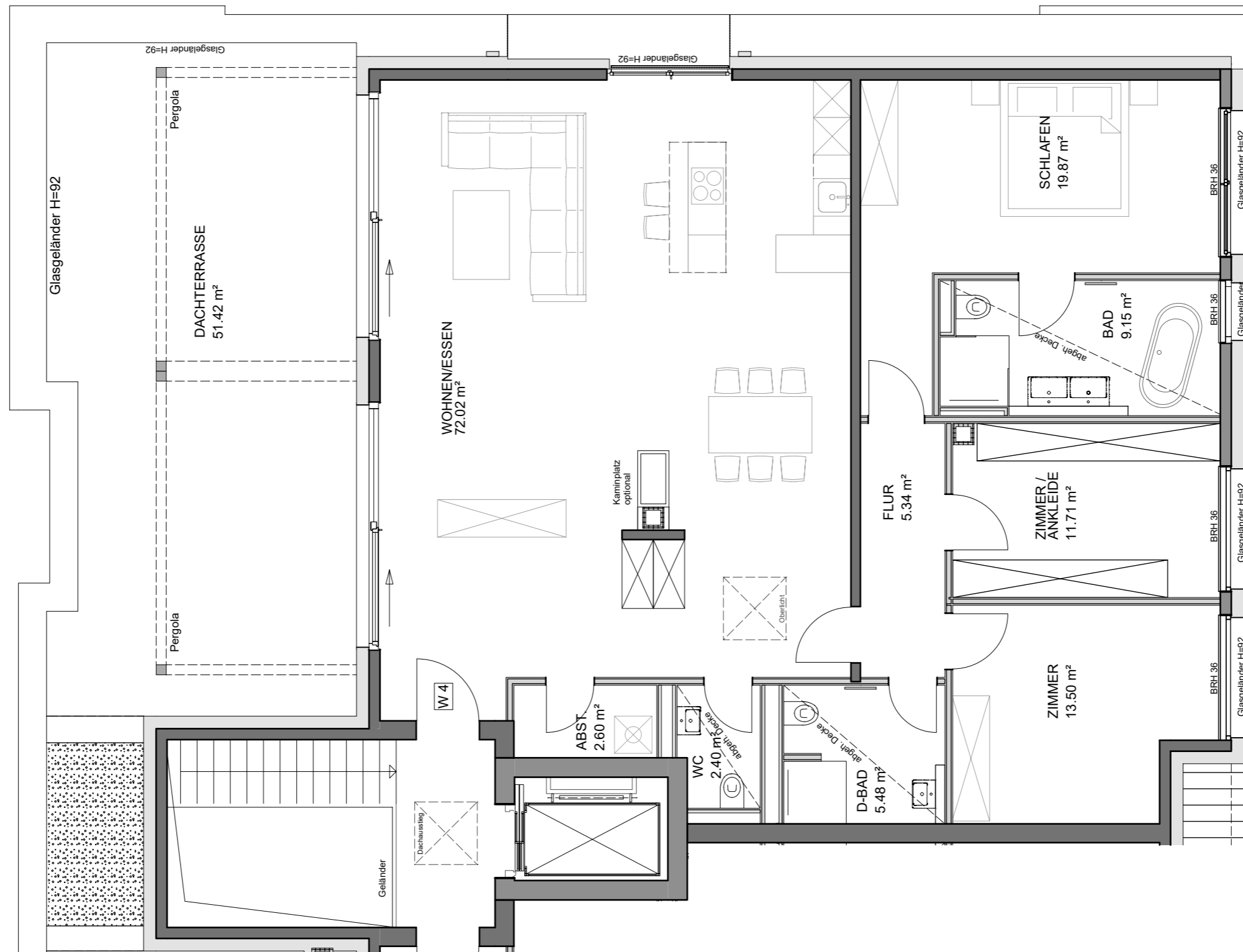
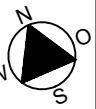
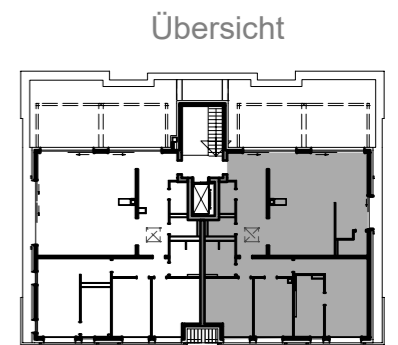


# Stadtvilla Biesterfeldweg 6



1 m 1 m 1 m



**Wohnung 4 - V3**

Staffelgeschoss

Wohnfläche gem. WoFIVO: 168,57 m<sup>2</sup>  
(Terrasse zu 50%)

nutzbare Wohnfläche : 194,27 m<sup>2</sup>

Maßstab 1:75