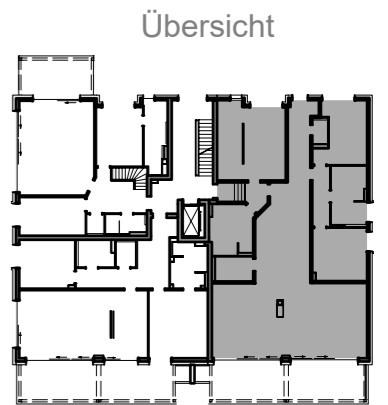
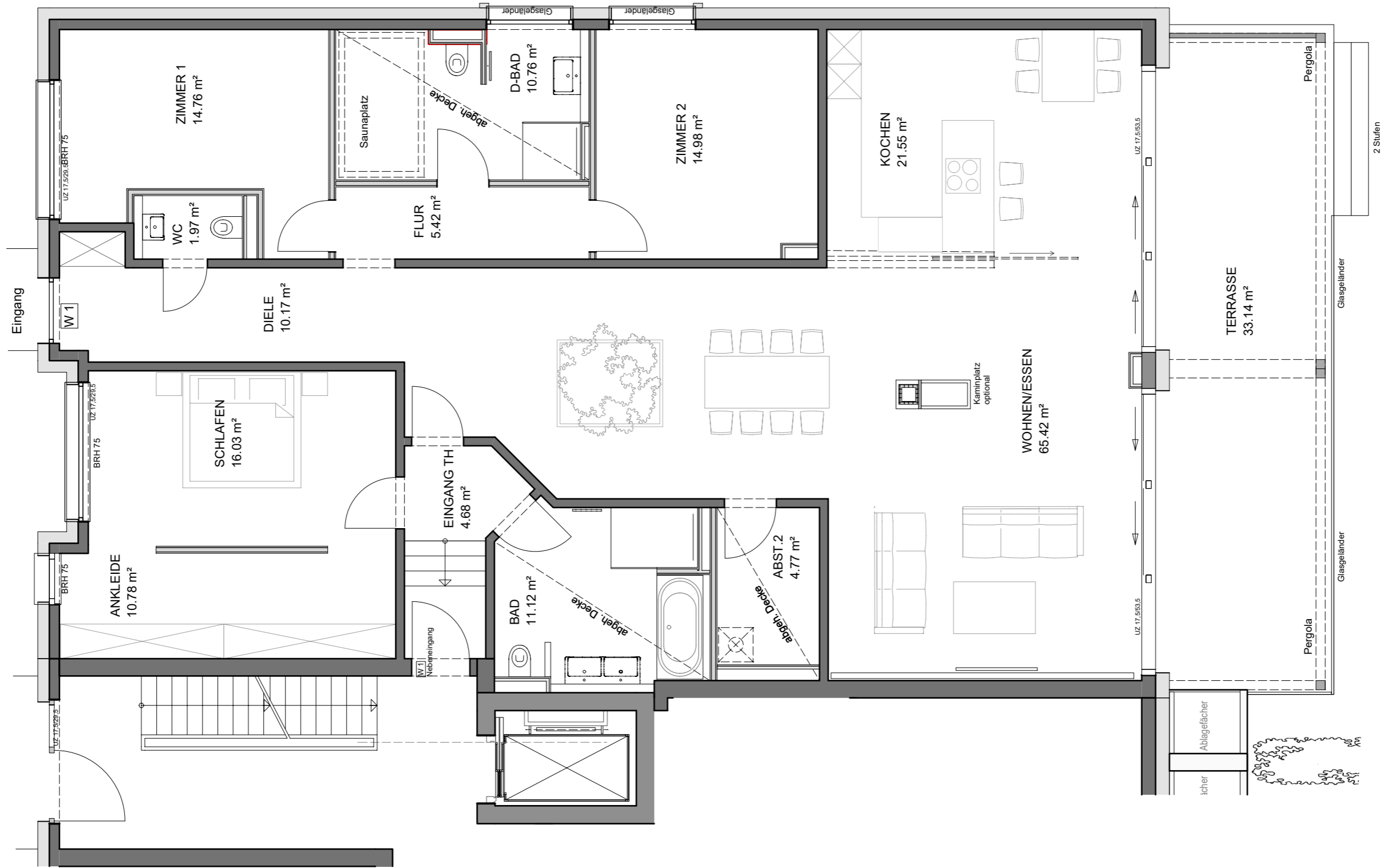
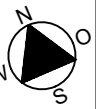


Stadtvilla Biesterfeldweg 6



1 m 1 m 1 m

Wohnung 1

Erdgeschoss

Wohnfläche gem. WoFIVO: 208,97 m²
(Terrasse zu 50%)

nutzbare Wohnfläche: 225,54 m²

Maßstab 1:75

H/B = 297 / 420 (0.12m²)

Allplan 2023