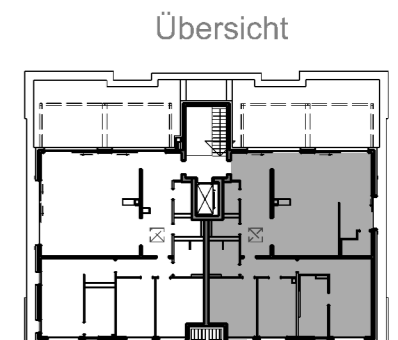
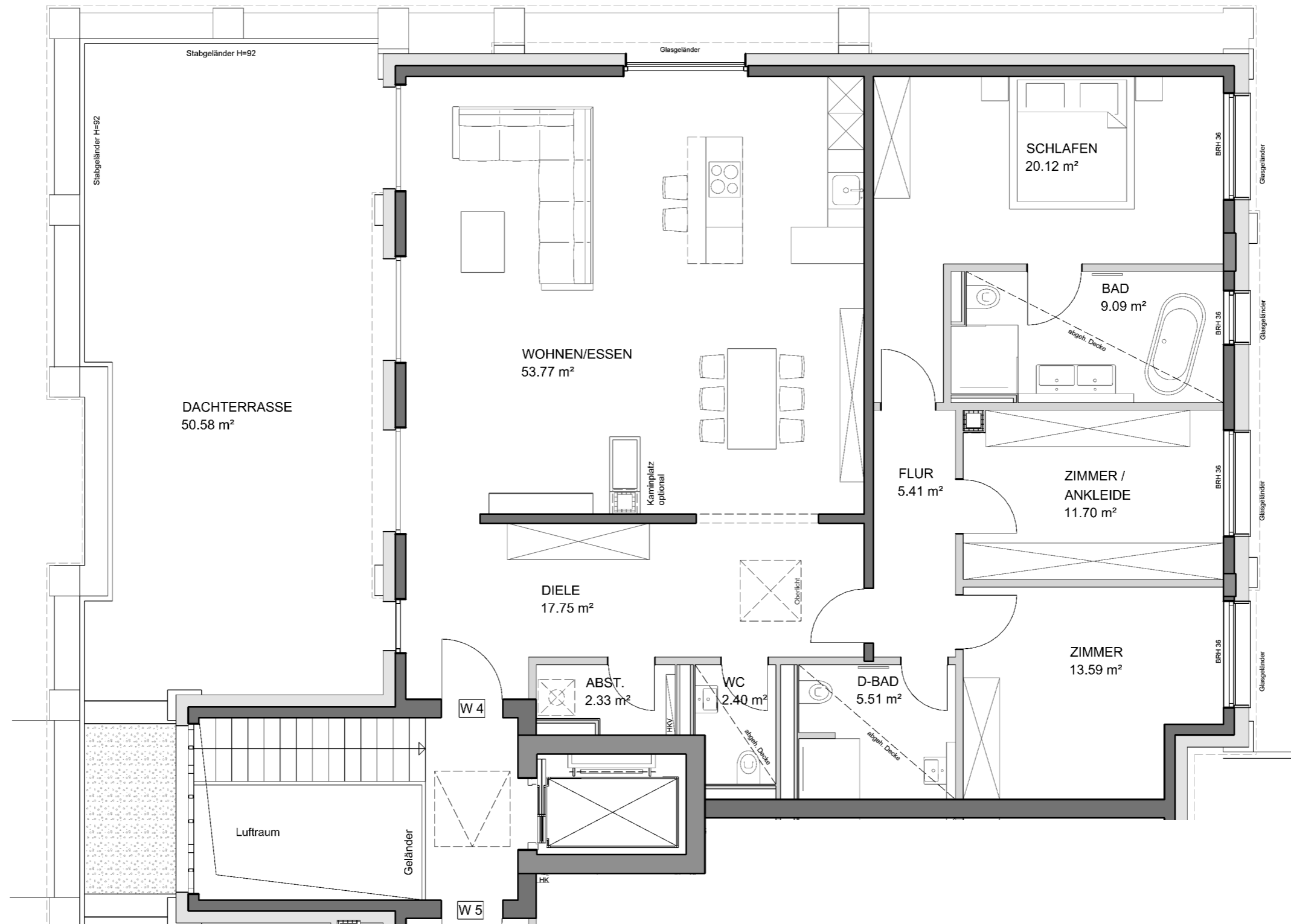


# Stadtvilla Biesterfeldweg 6



1 m 1 m 1 m

**Wohnung 4 - V1**

Staffelgeschoss

Wohnfläche gem. WoFIVO: 166,96 m<sup>2</sup>  
(Terrasse zu 50%)

nutzbare Wohnfläche : 192,25 m<sup>2</sup>

Maßstab 1:75