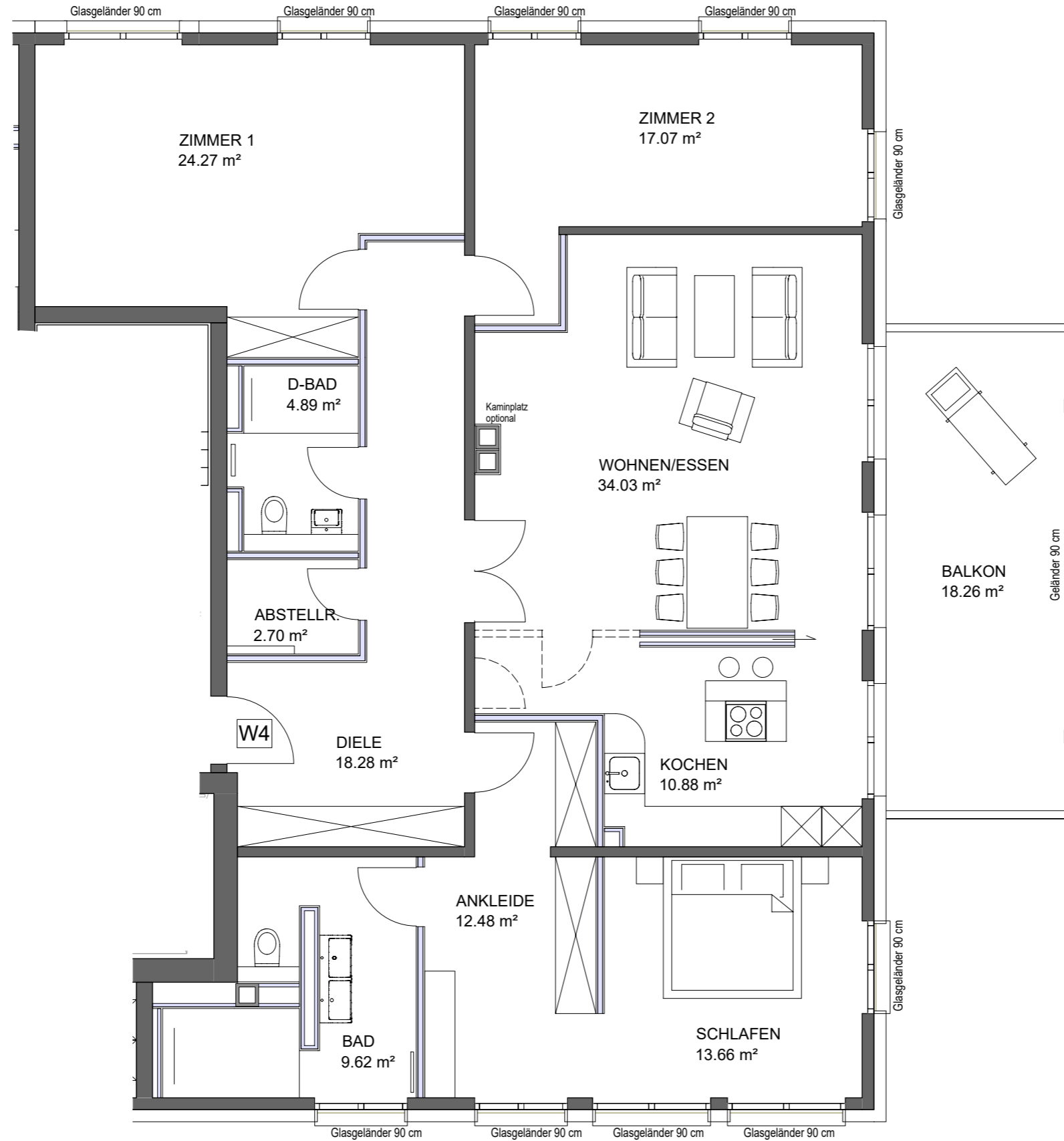
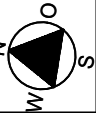
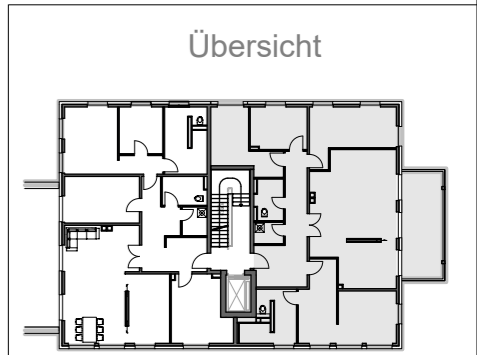


# Stadtvilla Müllenhoffweg 64



1 m 1 m 1 m



Wohnung 4 - Variante 1 Obergeschoss

Wohnfläche gem. WoFIVO : 157,00 m<sup>2</sup>  
(Balkon zu 50%)

nutzbare Wohnfläche : 166,13m<sup>2</sup>

Maßstab 1:75