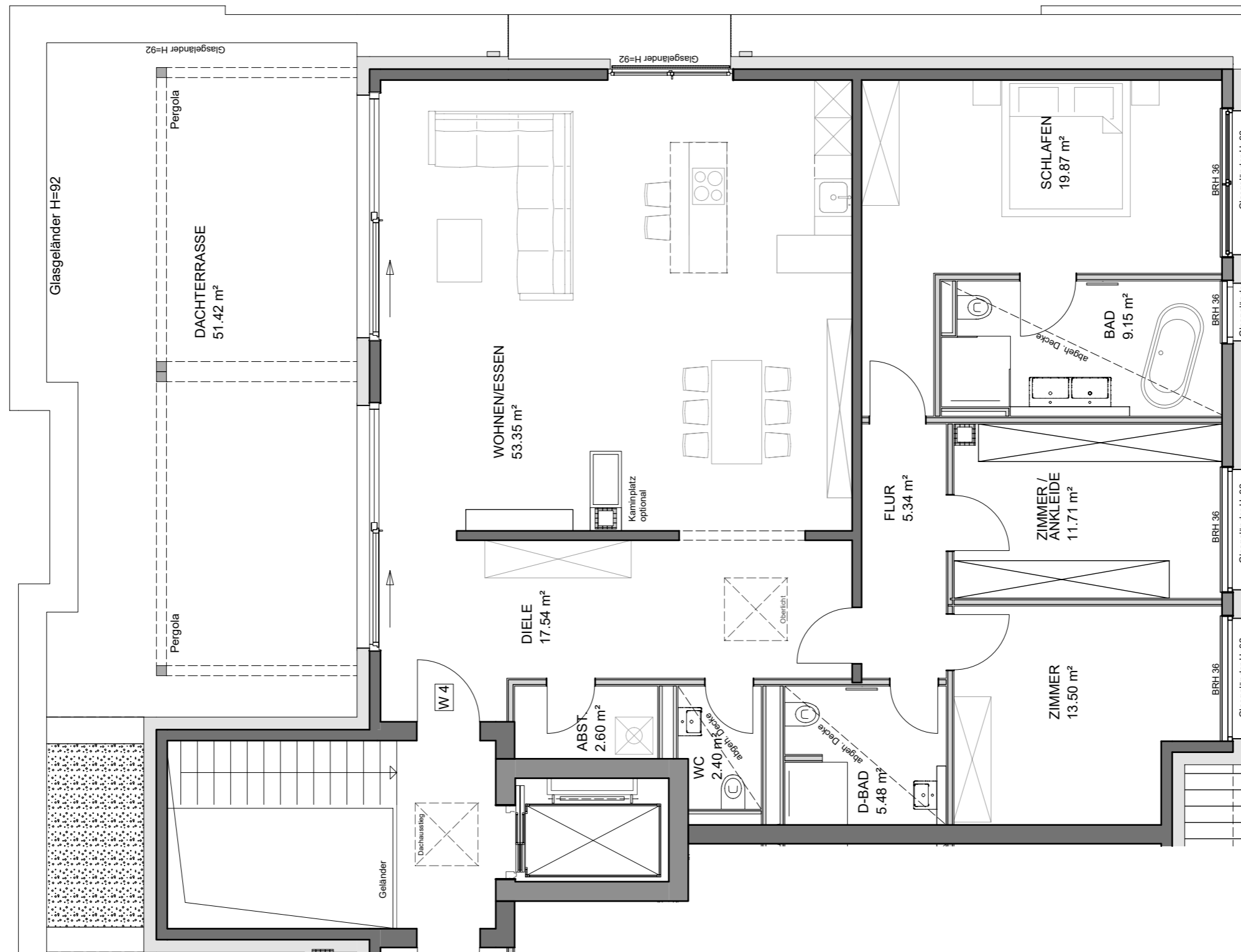
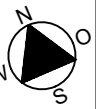
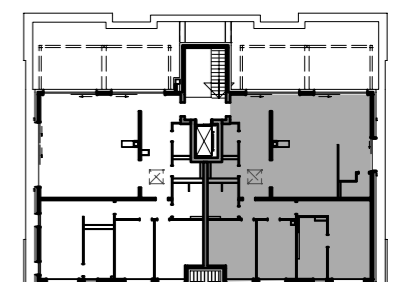


Stadtvilla Biesterfeldweg 6



1 m 1 m 1 m

Übersicht



Wohnung 4 - V1

Staffelgeschoss

Wohnfläche gem. WoFIVO: 167,49 m²
(Terrasse zu 50%)

nutzbare Wohnfläche : 193,20 m²

Maßstab 1:75